

FOR LEASE: INDUSTRIAL OUTDOOR STORAGE, CONSTRUCTION STARTING Q1 2024

7101 BRYHAWKE CIRCLE

NORTH CHARLESTON, SC



ALEX SHIELDS

Senior Associate

+1 904 377 9963

alex.shields@bridge-commercial.com

WILL CROWELL SIOR

Associate Vice President

+1 504 975 1099

will.crowell@bridge-commercial.com

PETER FENNELLY SIOR, MCR, SLCR

President

+1 843 425 0186

peter.fennelly@bridge-commercial.com



BRIDGE
COMMERCIAL

PROPERTY SUMMARY

SITE ACREAGE: ±16.25 Acres (divisible)

ADDRESS: 7101 Bryhawke Circle

CITY: North Charleston

ZONING: M-2 Heavy Industrial (rezoned)
Ability to ground and stack up to six (6) containers high

POWER: Dominion Energy South Carolina

SITE CONDITION Cleared/Partially cleared

LOCATION: Close proximity to I-26 between Ashley Phosphate and Dorchester Road

USE: Container storage, Container Depot, Truck and Trailer parking. Zoning Verification letter for container stacking Six (6) high

COMMENTS: Recently rezoned to M-2 Heavy Industrial, the subject property can accommodate a wide variety of uses and sizes for potential tenants. Approved for container stacking of Six (6) high and outdoor storage, 7101 Bryhawke Circle is uniquely positioned to service the Charleston market.



M-2 Heavy Industrial Zoning



Container stacking and Outdoor Storage Approved



Wide variety of uses and sizes for potential tenants



Strategically positioned to service the Charleston Market



AVAILABLE LOTS

LOT 1 ±8.95 Acres

LOT 2 ±7.30 Acres

FOR MORE INFORMATION, CONTACT BROKER FOR PRICING.

Bridge Commercial makes no guarantees, representations or warranties of any kind, expressed or implied, including warranties of content, accuracy and reliability. Any interested party should do their own research as to the accuracy of the information. Bridge Commercial excludes warranties arising out of this document and excludes all liability for loss and damages arising out of this document.

LOCATOR MAP

DAIMLER XPO Logistics
To Palmetto Commerce Park:
Home to Fortune500 and Fortune Global
Companies: Boeing, Daimler, Cummins,
XPO, etc.

Professional BUILDERS SUPPLY



ASHLEY PHOSPHATE RD

Ryder

G&D Integrated
Smart. Efficient. Logistics.

QC
Quality Carriers



mobile mini
SOLUTIONS

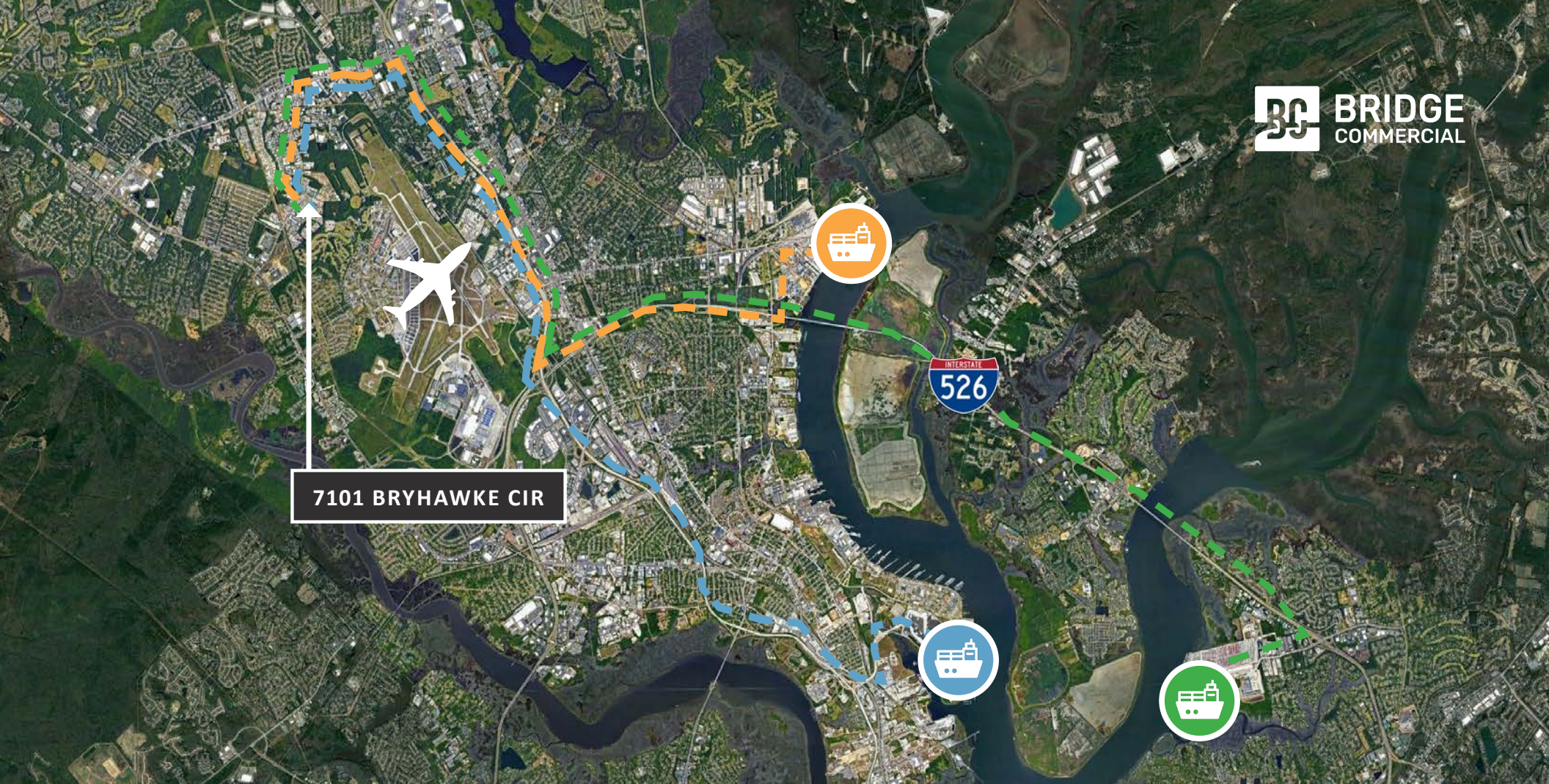
CHARLESTON
INTERNATIONAL AIRPORT

liquid transport corp

CROSS COUNTRY RD

7101 BRYHAWKE CIR

BRIDGE
COMMERCIAL



LOCATOR MAP

DISTANCE TO:

N. CHARLESTON TERMINAL

9.6 Miles

HUGE LEATHERMAN TERMINAL

12.7 Miles

WANDO WELCH TERMINAL

18.4 Miles

DISTANCE TO:

I-26

3.2 Miles

I-526

7 Miles

COLUMBIA

103 Miles



7101 BRYHAWKE CIRCLE

ALEX SHIELDS

Senior Associate

+1 904 377 9963

alex.shields@bridge-commercial.com

WILL CROWELL SIOR

Associate Vice President

+1 504 975 1099

will.crowell@bridge-commercial.com

PETER FENNELLY SIOR, MCR, SLCR

President

+1 843 425 0186

peter.fennelly@bridge-commercial.com

